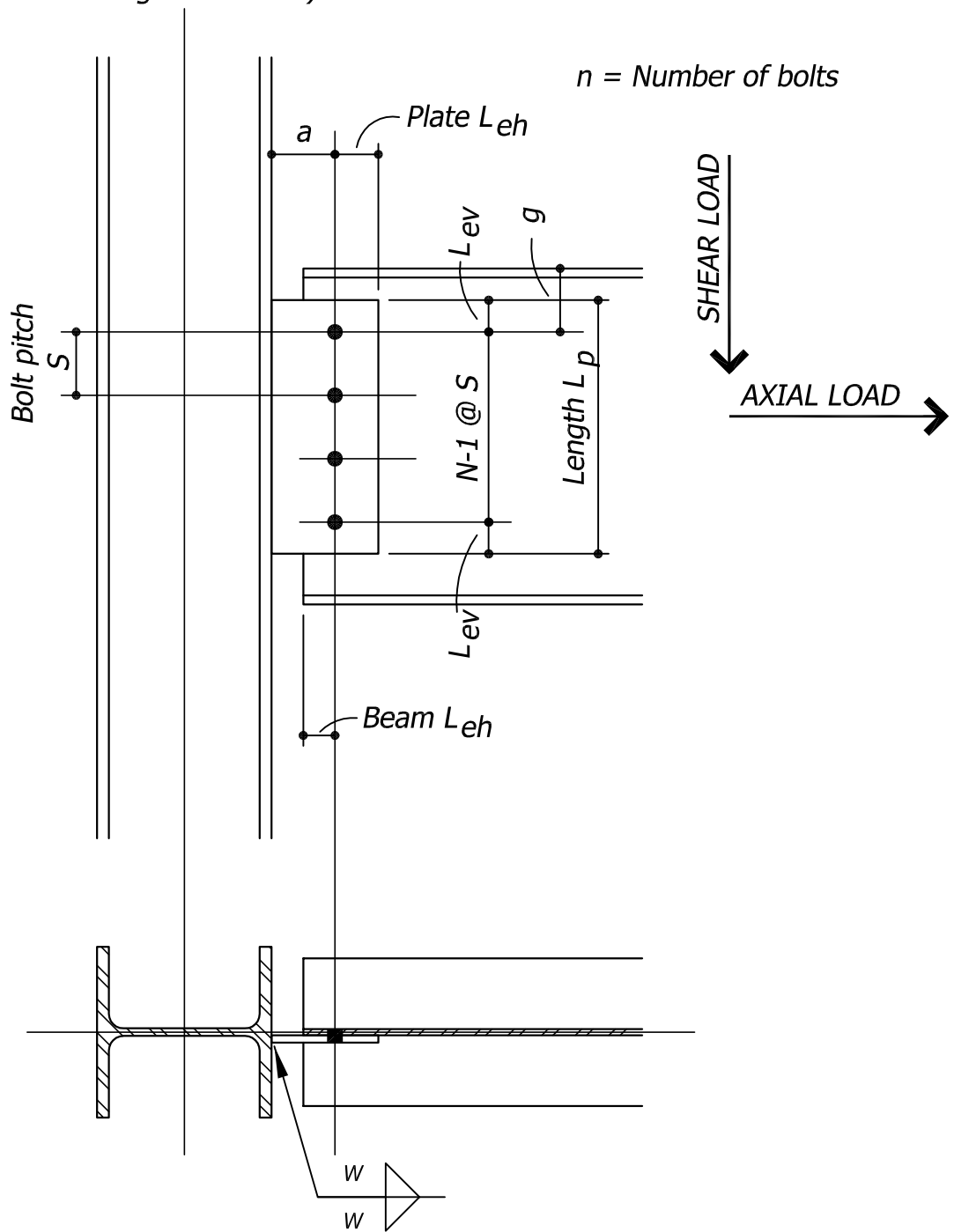


BEAM TO WF WITH SINGLE PLATE SHEAR CONNECTION

(Conventional SPSC Design Procedure)

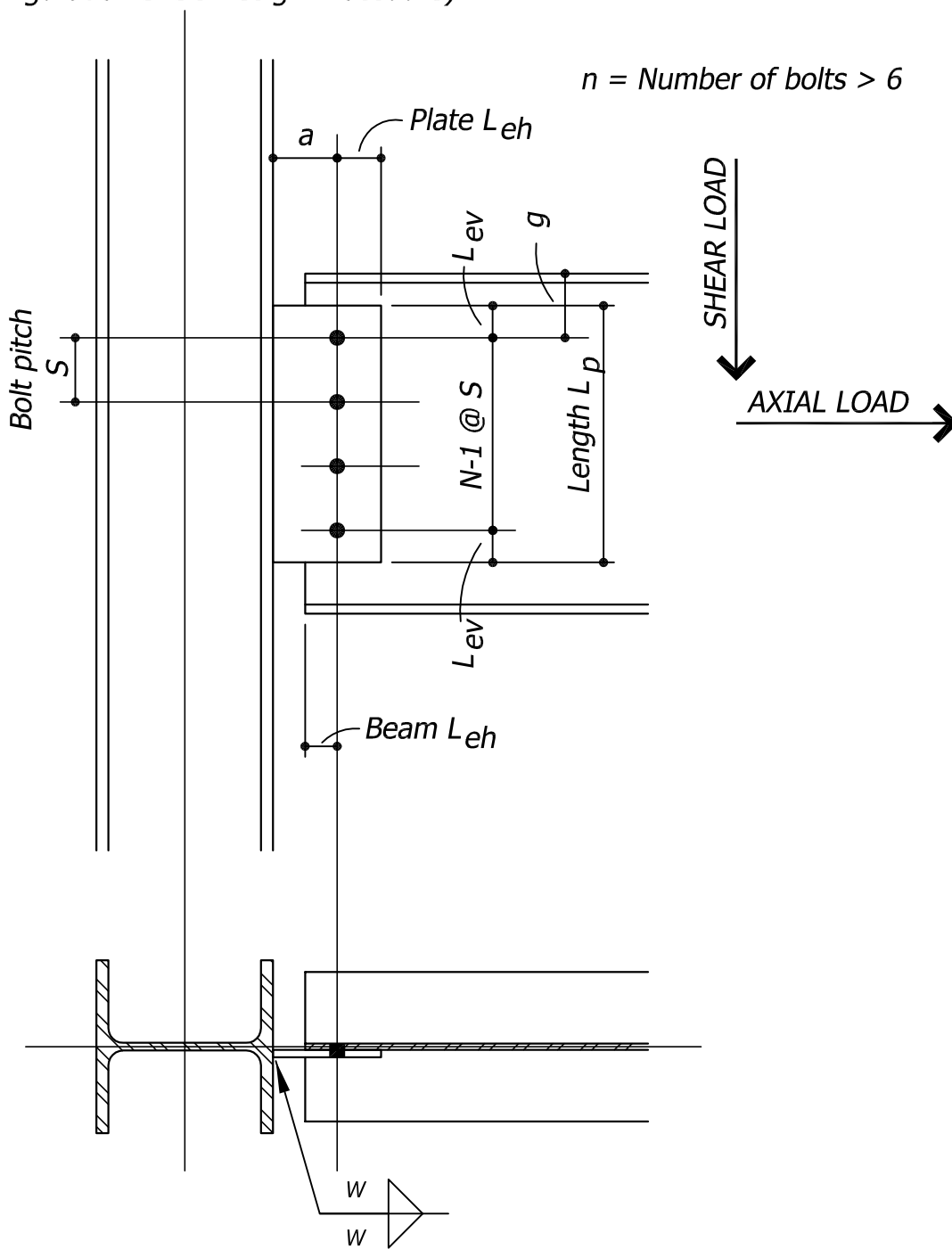


$$W = 5/8 \times \text{PLATE THICKNESS}$$

Workbook Tab:
SINGLE PLATE TO W FLG

BEAM TO WF WITH SINGLE PLATE SHEAR CONNECTION

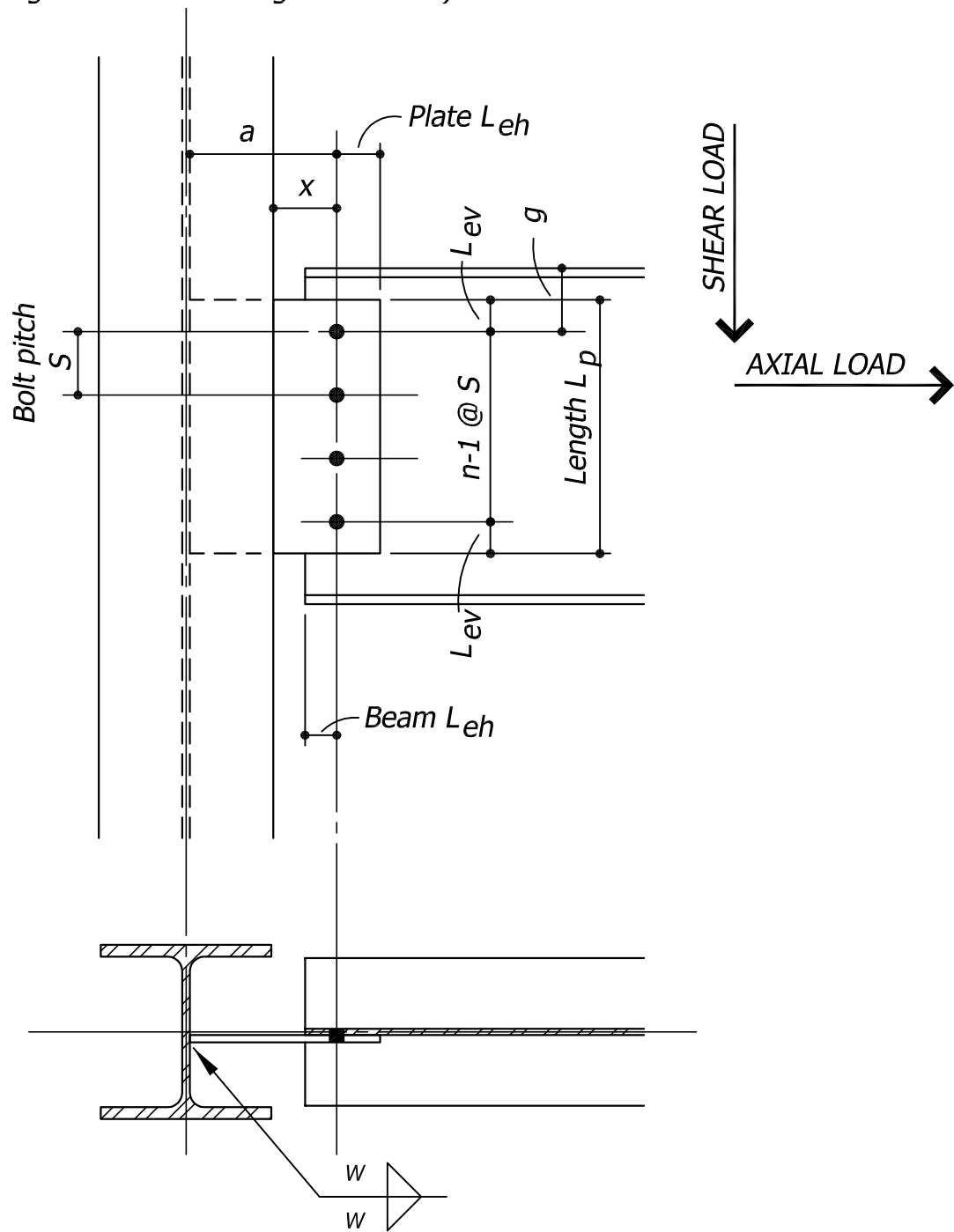
(Extended Configuration SPSC Design Procedure)



$W = 5/8 \times \text{PLATE THICKNESS}$

BEAM TO WF W/ EXTENDED SINGLE PLATE SHEAR CONN.

(Extended Configuration SPSC Design Procedure)



$W = 5/8 \times \text{PLATE THICKNESS}$

Workbook Tab:
EXTENDED SINGLE PLATE

DOUBLE ANGLE WELDED TO BEAM, BOLTED TO COLUMN FLANGE

